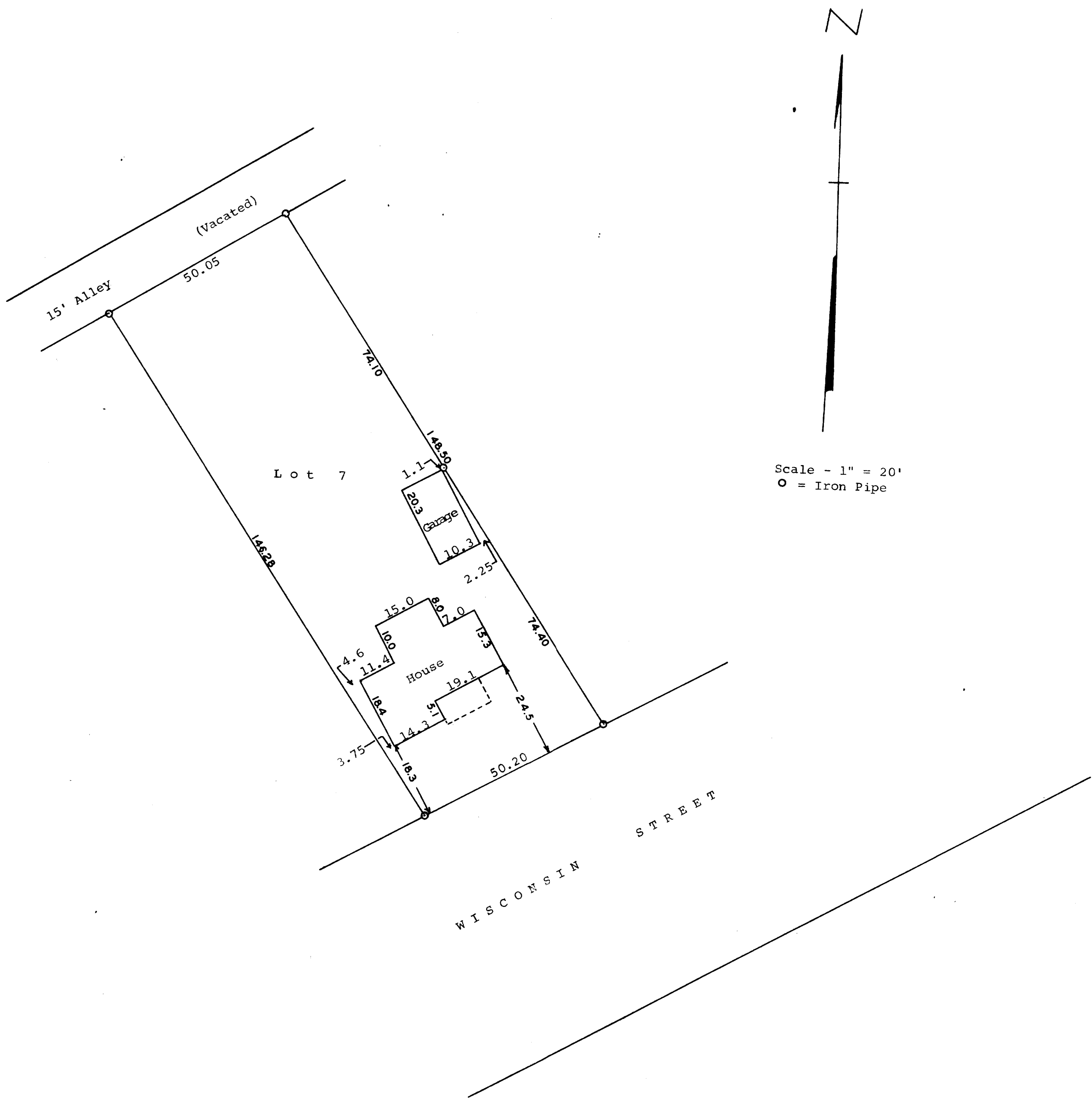


GEORGE T. DUNHAM  
SURVEYING & SUBDIVIDING  
DELAVER, WISCONSIN



STATE OF WISCONSIN)  
WALWORTH COUNTY ) SS

I, George T. Dunham, Surveyor, certify that I have surveyed the property described as follows,  
Lot 7, Block 5, Converse Subdivision located in the City of Delavan, Walworth County, Wisconsin.  
and that the above plat is an accurate survey and a true representation thereof and correctly shows the exterior boundary lines and location of buildings on said property and the correct measurements thereof.  
September 13, 1968

*George T. Dunham*  
George T. Dunham, Surveyor